

COMPREHENSIVE PLAN UPDATE

Community Event #1 Artisan Market Summary

Overview

Ardurra facilitated the Community Out Reach Event at the Artisan Market Day hosted by the City on August 31, 2025 at the Brazoria County Fairgrounds from 11:00 a.m.- 3:30 p.m. The Comprehensive Plan Advisory Committee Chairperson, City staff, and volunteers (Texas Southern University students) assisted with the event. The purpose of the event was to engage with the public, gain insight into community perspectives and priorities through various activities.

The event was advertised on City website and social media handles. Giveaways, event signs, fliers, and laptops were set up at the booth. Booth visitors included families with kids and all age groups.

Over 100 participants, including families with children and seniors, visited the booth and engaged in a variety of interactive activities. The hands-on format encouraged meaningful participation, allowing residents to share their perspectives, highlight areas of importance, and provide input to guide future planning efforts. The diverse participation ensured that a broad range of experiences and viewpoints were captured, reflecting the needs, priorities, and aspirations of the entire community.

Activities

The summary of activities and takeaways are listed below. All reasonable measures have been undertaken to protect the confidentiality of participants and to safeguard personally identifiable information. Data have been edited and presented in a manner that preserves contextual integrity while ensuring privacy and compliance with applicable privacy standards.

1. Angleton Vision Tree

Participants wrote their long-term vision for Angleton on note cards and hung them on a decorative tree. They were prompts such as “What is your vision for the City?” or “What should Angleton strive to be in the next 10–20 years?”

The community's desires were:

- Street improvements
- Mosquito control
- More pedestrian infrastructure - bike trails, bike trails in wilderness, sidewalks
- Community green space
- HEB
- Bigger Walmart
- Target
- Rising Canes
- Crumbl Cookies
- Chick-fil-A

- Chipotle
- Texas wildflowers around town
- Kids Empire or Bouncy House
- New senior living facilities
- Keep the City small and peaceful
- City has to pay for its own vision

2. Name the Plan

Participants were asked to suggest a name for the Comprehensive Plan. They wrote the suggested name of the plan on a sticky note and their name, email address, and phone number on the other side of the sticky note. The sticky notes were displayed on the poster board. The winning entry will be recognized on the project website and awarded a certificate and a prize.

The names received were:

- Heart of the Future
- Be like Nike and Do it
- This isn't 1980s Anymore
- Beauty of Angleton
- Make Angleton Plan
- Make Angleton Great Again!
- Home is Where the Heart Is!
- Angleton Community Action Plan
- Stop Planning and Try

3. Design the Cover

A design contest for the Comprehensive Plan Update report cover, targeted at local schools, was promoted at the booth. Flyers with contest details were distributed to encourage student participation and creativity. Submissions are due by December 1, 2025.

4. Great Wall of Angleton!

As part of the engagement activities, participants shared their ideas by posting sticky notes on a board. This activity invited residents to reflect on the community's Strengths, Weaknesses, Opportunities, and Threats (SWOT), providing a structured way to capture diverse perspectives. The feedback collected offers valuable insights into how the community views itself, highlighting areas of pride, challenges to address, potential growth opportunities, and external factors that could impact the city's future. The summarized responses are presented below:

Strengths

- Small town feel with access to water – without paying high waterfront prices
- Not crowded, friendly, low crime – current community atmosphere is safe and welcoming
- Community events like fairs – show a sense of safety and togetherness
- "Home is where the heart is" – strong emotional connection to the community

Weaknesses

- Close to schools, but safety concerns exist
- Teen programs, playgrounds, and skate parks are lacking
- Entertainment options are limited
- Poor nightlife and many potholes

- Inadequate drainage system
- Street issues on West Columbia – includes traffic, fire risk, drainage, and 18-wheeler problems
- Senior living facilities are outdated – no in-unit washer/dryer, garbage disposal, dishwasher
- Utility lines too low in alleys – difficult to report or fix issues
- JHS (Junior High School) is isolated – poor City-ISD coordination
- Home builder signs clutter the Right of Way (ROW)
- Too much traffic to Houston
- Not enough communication with local farmers

Opportunities

- Evening bus service – connect after-school activities to homes or central spots
- More walkability – paths, sidewalks, pedestrian-friendly areas
- Arcade/E-games station – example: like the one in Lake Jackson
- Dining options - demand for popular food chains (Raising Cane's, Chick-fil-A, Jimmy John's);
- Entertainment options -Movie theater, nightlife, family-friendly restaurants
- Retail expansion – larger Walmart/HEB, bar & grills, fresh produce, bakery. Current residents travel to Lake Jackson. Larger grocery stores can draw people from Brazoria
- Bigger mall – reduce need to go to Houston
- Plant Texas wildflowers around the city – beautification and local pride
- Economic development – chance to attract investment, jobs, and growth

Threats

- Overdevelopment – could lead to traffic congestion similar to Houston or Alvin
- Loss of small-town identity – as large chains and construction increase
- Increased traffic from new construction – especially for commuters to Houston
- Infrastructural strain – drainage, utilities, roads may not keep up with growth
- Unbalanced growth without support services – e.g., senior housing, public transport

5. Pin Map Exercise

The participants put pins and weaved a yarn to show where they live, work, play, and pray on a City Limits and Extra Territorial Jurisdiction Map. Some findings from the participants' responses are summarized below:

Living (Angleton)

Participants lived primarily within the Angleton City Limits, with homes clustering in the following areas:

- Near schools (Junior High and High School)
- Central and southern neighborhoods
- Northern residential areas

Work

Several participants commuted outside Angleton for employment, with Freeport to the south

and Pearland to the north.

- Freeport, located 20–22 miles south (25–30 minutes from Angleton)
- Pearland and further north, located 25–28 miles or more (30–35 minutes or more)
- Local Angleton - work from home, home occupations, or local employment, located within the City Limits or Extra Territorial Jurisdiction

Play

Participants enjoyed both local parks and facilities within Angleton and outside.

- Brazoria (Wildlife Refuge)
 - Located 12–15 miles southeast (20 minutes from Angleton)
- Freeport (Fishing)
 - Located 20–22 miles south (25–30 minutes from Angleton)
- Local Recreation
 - Some of the places are Freedom Park, Lakeside Park, Bates Park, and Angleton Recreation Center, located within the City Limits

Shop

Participants rely on both local and regional retail destinations.

- Lake Jackson (HEB)
 - Located 13 miles south (15–20 minutes from Angleton)
- Pearland (Costco)
 - Located 25–28 miles north (30–35 minutes from Angleton)
- Angleton (Kroger/Walmart)
 - Located within the City Limits

Pray / Other

Participants rely on local facilities for worship.

- Churches and faith centers
 - Located within the City Limits

Refer to Attachment A: Pin Map Exercise for more information.

The exercise highlights that most Participants live and worship within Angleton, while recreation, employment, and major shopping often require travel to nearby cities such as Freeport, Lake Jackson, and Pearland.

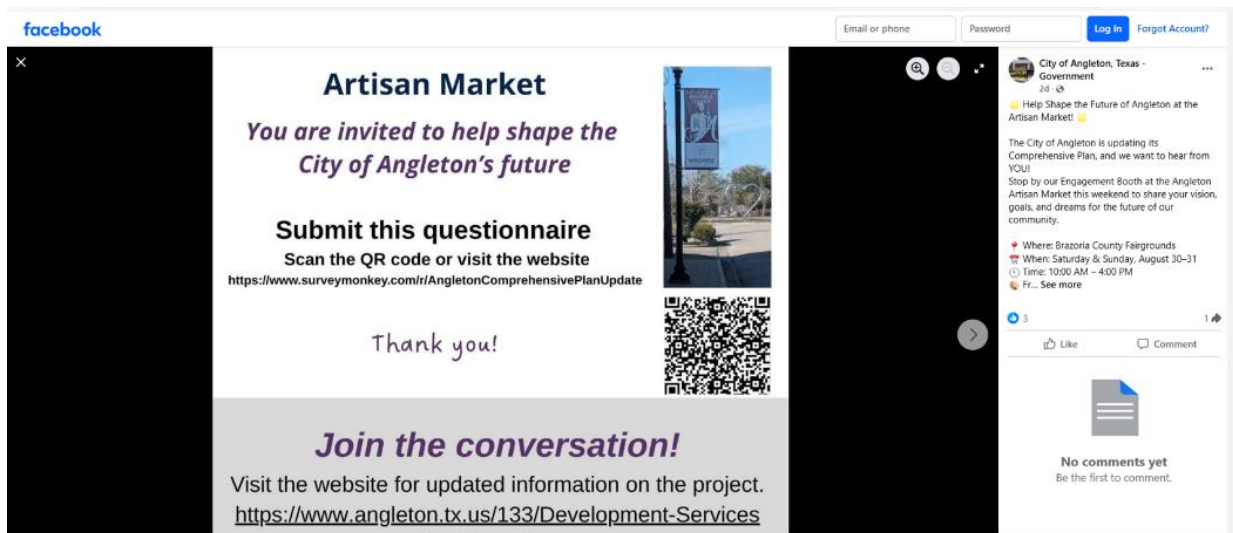
6. Fill the Questionnaire to Win a Prize

The participants were encouraged to complete the SurveyMonkey Questionnaire on the iPads/laptops arranged at the booth or on their own device. Giveaways were given after completion of the questionnaire.

Additionally, several visitors scanned the QR code to fill out the questionnaire later and share it with their contacts.

At the conclusion of the event, staff and Ardurra gathered all completed materials, including sticky notes, note cards, and marked maps, to ensure that all public input is preserved for analysis.

Event Related Photos



Facebook Post Before the Event



Facebook Post on the Day of the Event



Vision Tree

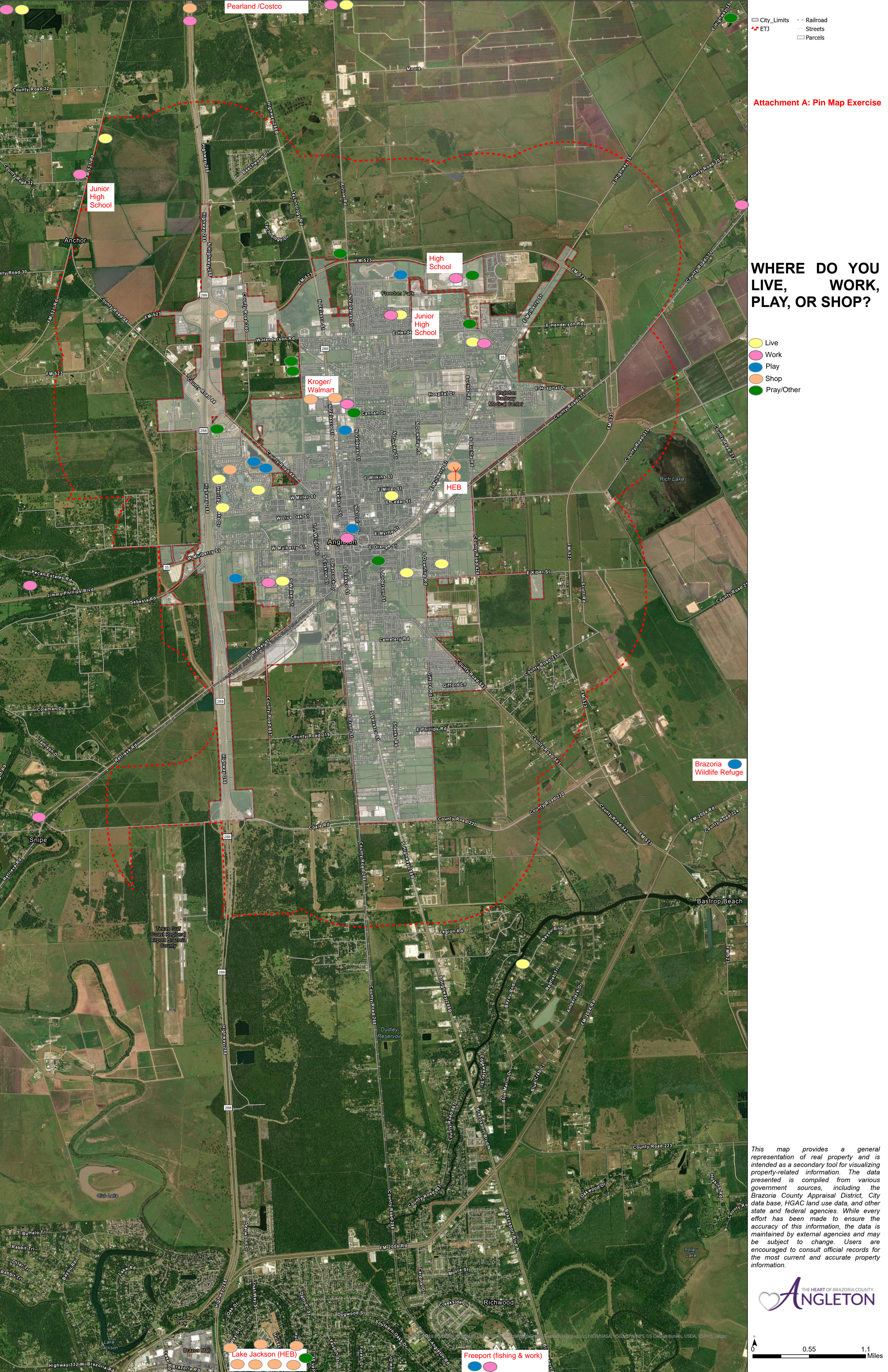
Laptop/Questionnaire Station



Pin Map Exercise



Engagement with Participants



- City Limits
- Railroad
- ETJ
- Streets
- Parcels

Attachment A: Pin Map Exercise

WHERE DO YOU LIVE, WORK, PLAY, OR SHOP?

- Live
- Work
- Play
- Shop
- Pray/Other



This map provides a general representation of real property and is intended as a secondary tool for visualizing property-related information. The data presented is compiled from various government sources, including the Brazoria County Appraisal District, City data base, HGAC land use data, and other state and federal agencies. While every effort has been made to ensure the accuracy of this information, the data is maintained by external agencies and may be subject to change. Users are encouraged to consult official records for the most current and accurate property information.



Lake Jackson (HEB)

Freeport (fishing & work)